



Mataffin Macadamia

Lifestyle and Assisted Living Village

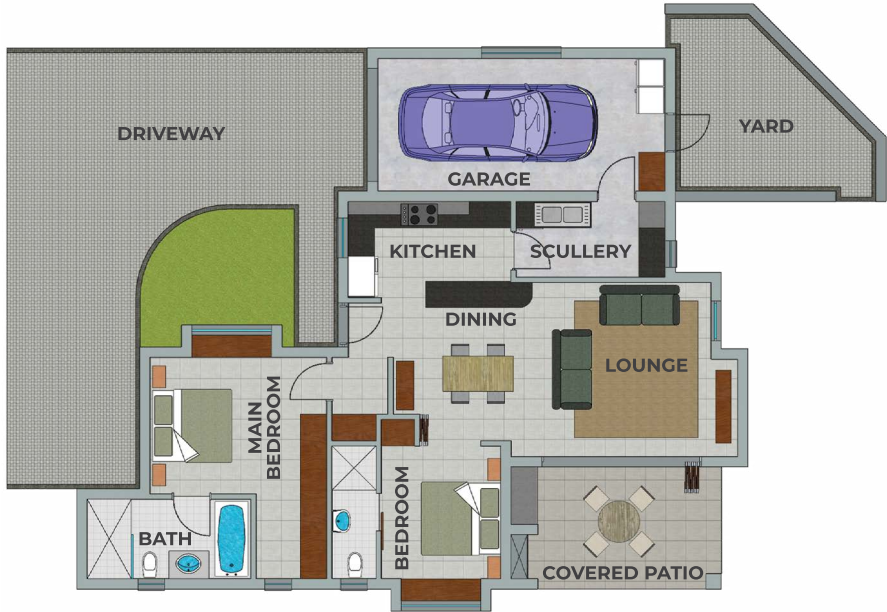


Senior Lifestyle Freehold Homes for Plus 45s



UNIT 340 FLOOR PLAN

| | |
|---------------|---------------------------|
| Garage | 24m ² |
| House | 92.6m ² |
| Covered Patio | 13m ² |
| Total | 129.6m² |
| Yard | 14.4m ² |



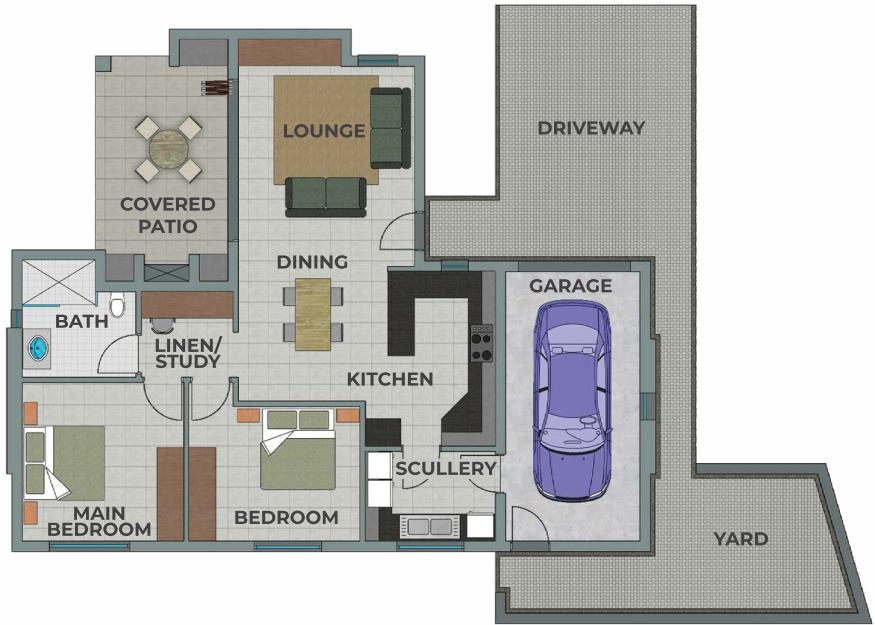
UNIT 342A FLOOR PLAN

| | |
|---------------|---------------------------|
| Garage | 24m ² |
| House | 97.7m ² |
| Covered Patio | 13m ² |
| Total | 134.7m² |
| Yard | 15.7m ² |



UNIT 342B FLOOR PLAN

| | |
|---------------|---------------------------|
| Garage | 22.3m ² |
| House | 90.5m ² |
| Covered Patio | 15.4m ² |
| Total | 128.2m² |
| Yard | 17.9m ² |



UNIT 343 FLOOR PLAN

| | |
|---------------|---------------------------|
| Garage | 24m ² |
| House | 97.7m ² |
| Covered Patio | 13m ² |
| Total | 134.7m² |
| Yard | 21m ² |



UNIT 344 FLOOR PLAN

| | |
|---------------|---------------------------|
| Garage | 20.8m ² |
| House | 98.9m ² |
| Covered Patio | 13m ² |
| Total | 132.7m² |
| Yard | 5.3m ² |



UNIT 345 FLOOR PLAN

| | |
|---------------|---------------------------|
| Garage | 20.8m ² |
| House | 98.9m ² |
| Covered Patio | 13m ² |
| Total | 132.7m² |
| Yard | 5.3m ² |



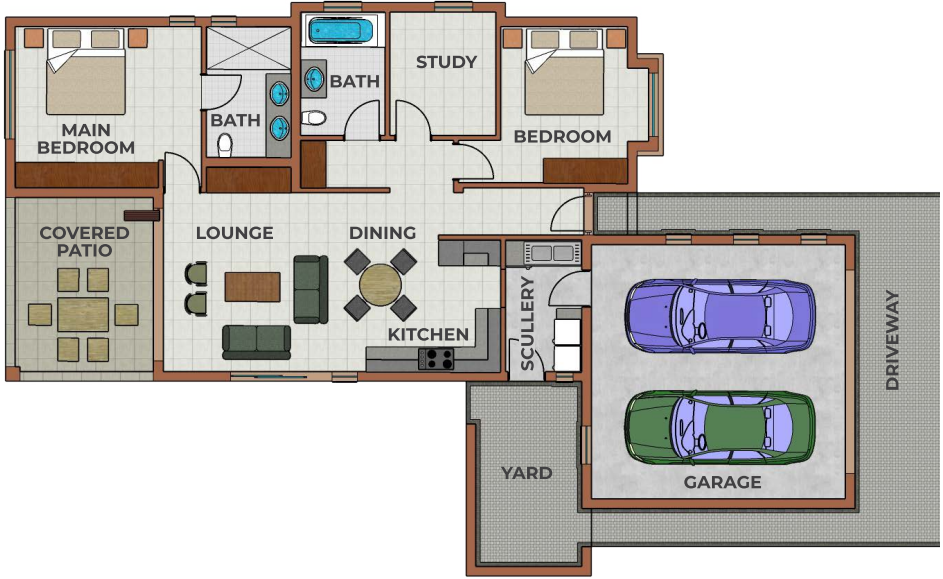
UNIT 359 FLOOR PLAN

| | |
|---------------|---------------------------|
| Garage | 40.4m ² |
| House | 114.8m ² |
| Covered Patio | 15.2m ² |
| Total | 170.4m² |
| Yard | 7.4m ² |



UNIT 360 FLOOR PLAN

| | |
|---------------|---------------------------|
| Garage | 40.2m ² |
| House | 111.3m ² |
| Covered Patio | 15.2m ² |
| Total | 167.7m² |
| Yard | 12.9m ² |



UNIT 366/369 FLOOR PLAN

| | |
|---------------|---------------------------|
| Garage | 24.5m ² |
| House | 102m ² |
| Covered Patio | 17.2m ² |
| Total | 143.7m² |
| Yard | 7.3m ² |



UNIT 368 / 370 / 371

FLOOR PLAN

| | |
|---------------|---------------------------|
| Garage | 24.5m ² |
| House | 102m ² |
| Covered Patio | 17.2m ² |
| Total | 143.7m² |
| Yard | 7.3m ² |



SITE DEVELOPMENT PLAN

